

TECHNICAL DATA

MODEL		DEV-12A	DEV-16A	DEV-204A	
CAPACITY					
untill lift height	Q kg	600	800	1000	
	M mm	3600	3600	2900	
Load center	X mm	500	500	400	
UNLADEN WEIGHT					
incl. battery and standard mast		approx. kg	1440	1670	1700
AXLE LOADS laden / unladen					
	front	kg	1560 / 610	1910 / 560	2250 / 570
	rear	kg	480 / 830	560 / 1110	450 / 1130
BATTERY WEIGHT		approx. kg	350	407	407
PERFORMANCES					
Speed laden / unladen					
	travel	km/h	8,5 / 10	7,5 / 8,5	6,5 / 7,5
	lift	m/s	0,17 / 0,23	0,18 / 0,27	0,17 / 0,27
	lower	m/s	0,30 / 0,33	0,42 / 0,33	0,42 / 0,33
Gradeability laden / unladen (5 min. rating)		%	17 / 23	16 / 23	14 / 23
TYRES – cushion					
number front – rear		No	2/1	2/1	2/1
Size front		mm	300 x 100 x 203	313x130x203	
Size rear		mm	260 x 130 x 170	260x130x170	
TRACK WIDTH		mm	777	807	
DIMENSIONS					
in mm					
	A	205	260	260	
	B	860	860	860	
	C	240	240	240	
	D	1305	1360	1360	
	e	30	30	30	
	b	80	80	80	
	g	440	440	440	
Adjustable forks position		K	from 220 to 755		
	J	800	800	800	
	W	877	877	937	
Ground clearance at lowest point		G1	75	75	80
Ground clearance center of wheel base		G3	100	100	100

T – Aisle for storing at 90° with pallet PxL mm	800 x 1200	2305	2360	2360
	1000 x 1200	2505	2560	2560
	1200 x 1200	2705	2760	2760
R – Turning radius	mm	1065	1120	1120

LIFT SPECIFICATIONS – HIGH VISIBILITY						
TYPE OF MAST	MAX. FORK HEIGHT M mm	FREE FORK HEIGHT LL mm	OVERALL HEIGHT H mm	OVERALL HEIGHT at max. fork height H	TILT	
					α	β
23 T	2300	130	1595	2740	8°	3°
26 T	2600	130	1745	3040	8°	3°
29 T	2900(standard)	130	1895	3340	8°	3°
33 T	3300	130	2095	3740	8°	3°
36 T	3600	130	2245	4040	3°	2°
38 T	3800	130	2345	4240	3°	2°
40 T	4000	130	2445	4440	3°	2°
LIFT SPECIFICATIONS – DUPLEX						
23 X	2300	1130	1575	2740	8°	3°
29 X	2900	1455	1895	3340	8°	3°
33 X	3300	1650	2095	3740	8°	3°
40 X	4000	2055	2495	4440	3°	2°
LIFT SPECIFICATIONS – TRIPLEX						
43 Z	4300	1400	1925	4740	3°	1°
50 Z	5000	1700	2245	5440	3°	1°
52 Z	5200	1750	2295	5640	3°	1°
55 Z	5500	1850	2395	5940	3°	1°

For asking, special lifting heights.

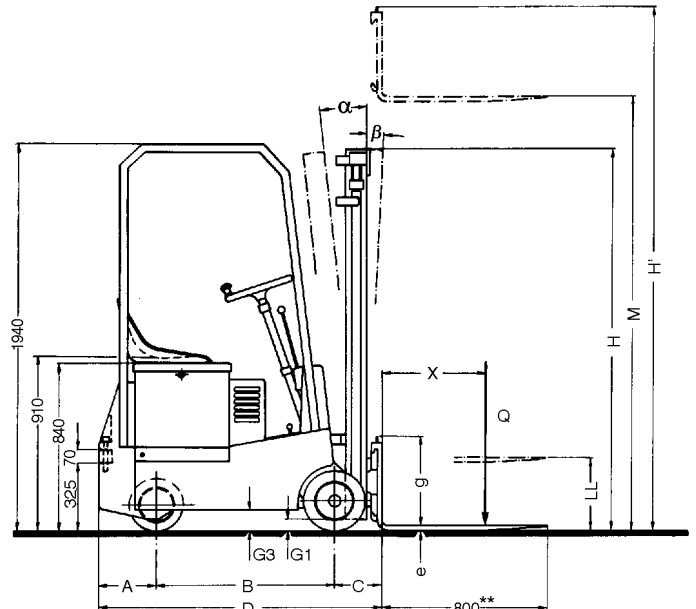
For lifting heights superior of 3600 mm, pls consult us for relative capacities reductions.

BATTERY DEV-12A – Voltage: 24 volts. Capacity based on 5h discharge rate: 350 Ah. Approximate weight: 350 kg. Dimensions: 730x412x447 mm.

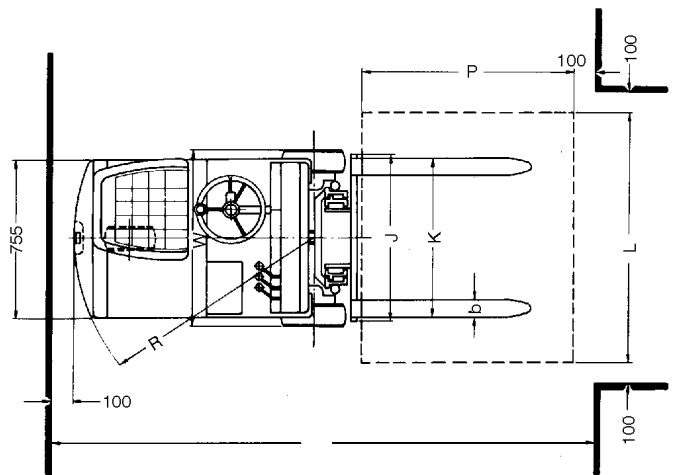
BATTERY DEV-16A and DEV-204A – Voltage: 24 volts. Capacity based on 5h discharge rate: 420 Ah. Approximate weight: 400 kg. Dimensions: 730x412x447 mm. The battery is mounted on rollers to enable easy and quick removal, from the right hand side. A readily accessible connector plug allows speedy disconnecting of power.

Motors – Two drive motors each 1.0 kW. Pump motor 2.0 kW on **DEV-12A** and 3.0 kW on **DEV-16A** and **DEV-204A**.

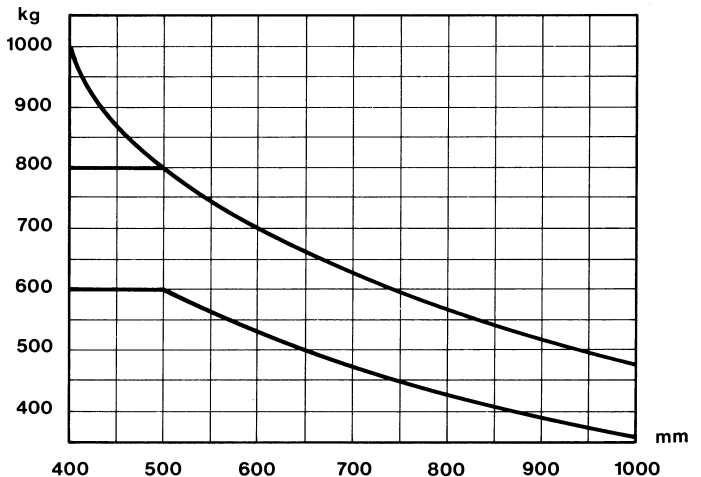
DRIVE CONTROLLER – Eletronic control of traction is standard. This system enables the truck to be accelerated from stand still to full speed without any speedstep. By a right use of accelerator pedal and directional control switch, the truck has a progressive electrical braking.



**Standard forks length. (For asking, forks of different length)



CAPACITY CHART



Load center "X" in millimeters

TRANSMISSIONS – Each drive motor is connected to a drive wheel trough double-reduction spur gears of high efficiency. Gears operate in a totally enclosed oil bath. No differential or bevel gears.

TELESCOPIC MAST – Mast sections of high visibility masts are designed to combine maximum rigidity with excellent seethrough visibility between the mast uprights. The bar fork carriage (FEM I A) allows a good visibility of forks and load.

INSTRUMENTATION – Hourmeter and discharge battery indicator.

WARNING SIGNAL – Electric horn.

SAFETY – Standard equipment on this truck includes a driver overhead canopy guard. This truck conforms to stability requirements of BITA, FEM, DIN, AFNOR and CEE.

OPTIONAL EQUIPMENT – Special designs and attachments available on request. Example: integral sideshifter without capacity reduction; a build-in battery charger; load backrest; power steering.

All specifications and data above mentioned are subject to change without notice.